



Blue Kai

Property Development

Na'avi Villas

Uluwatu , Bali

Shaped By Nature, Built For Comfort.

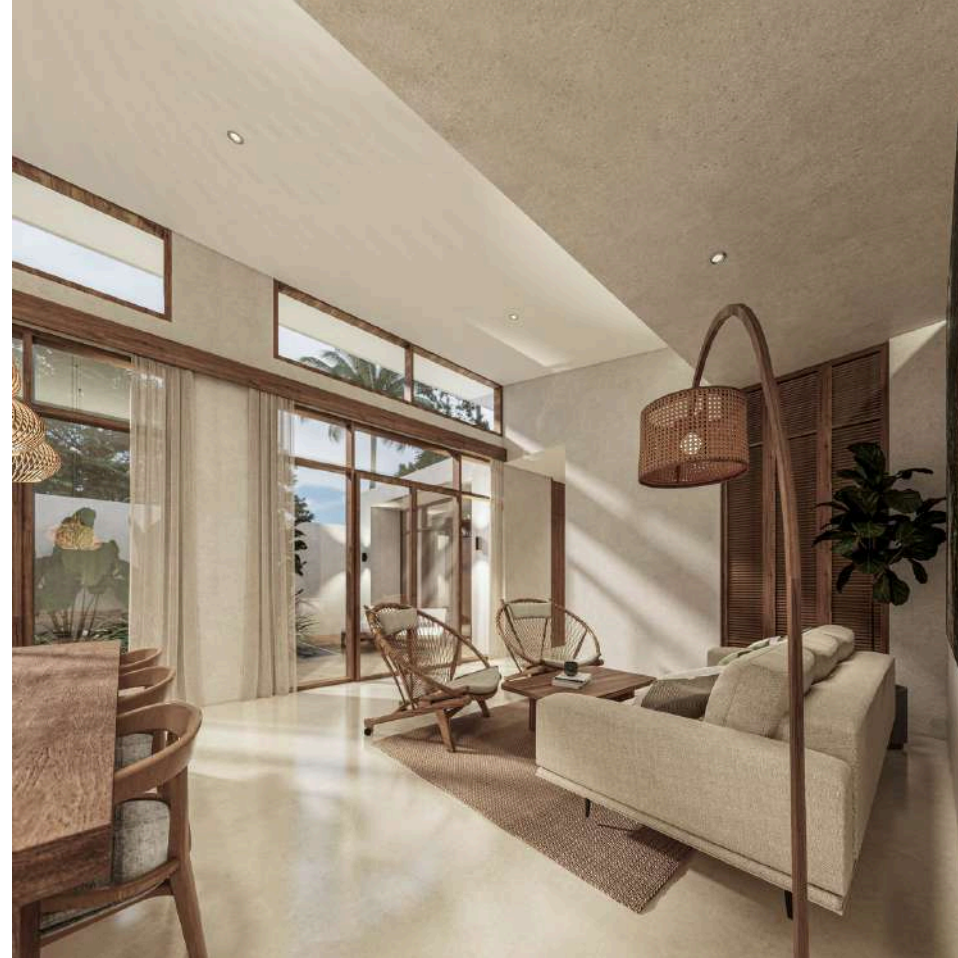
Experience Bali from a prime location offering you the luxury of a restful vacation, mere steps away from pristine beaches, world-class surf, the finest restaurants, and cultural events in Uluwatu.

PRIME LOCATION



Our dedication revolves around crafting homes and spaces only of high-end materials and lasting longevity. This commitment guarantees a sustainable and luxurious feel that withstands the test of time.

PREMIUM MATERIALS



In partnership with "Construct Bali" and "Edward Bryan Architecture Studio", we bring to life a truly distinctive design and style, with a genuine commitment to state-of-the-art building standards.

STRONG PARTNERS



Introduction

Introducing our collection of high-end nature-inspired villas in the prestigious and sought-after location of Uluwatu, Bali.

A 5 villa boutique project consisting of 4 units of Na'avi 2-bedroom villas & 1 unit of Pali 1-bedroom.

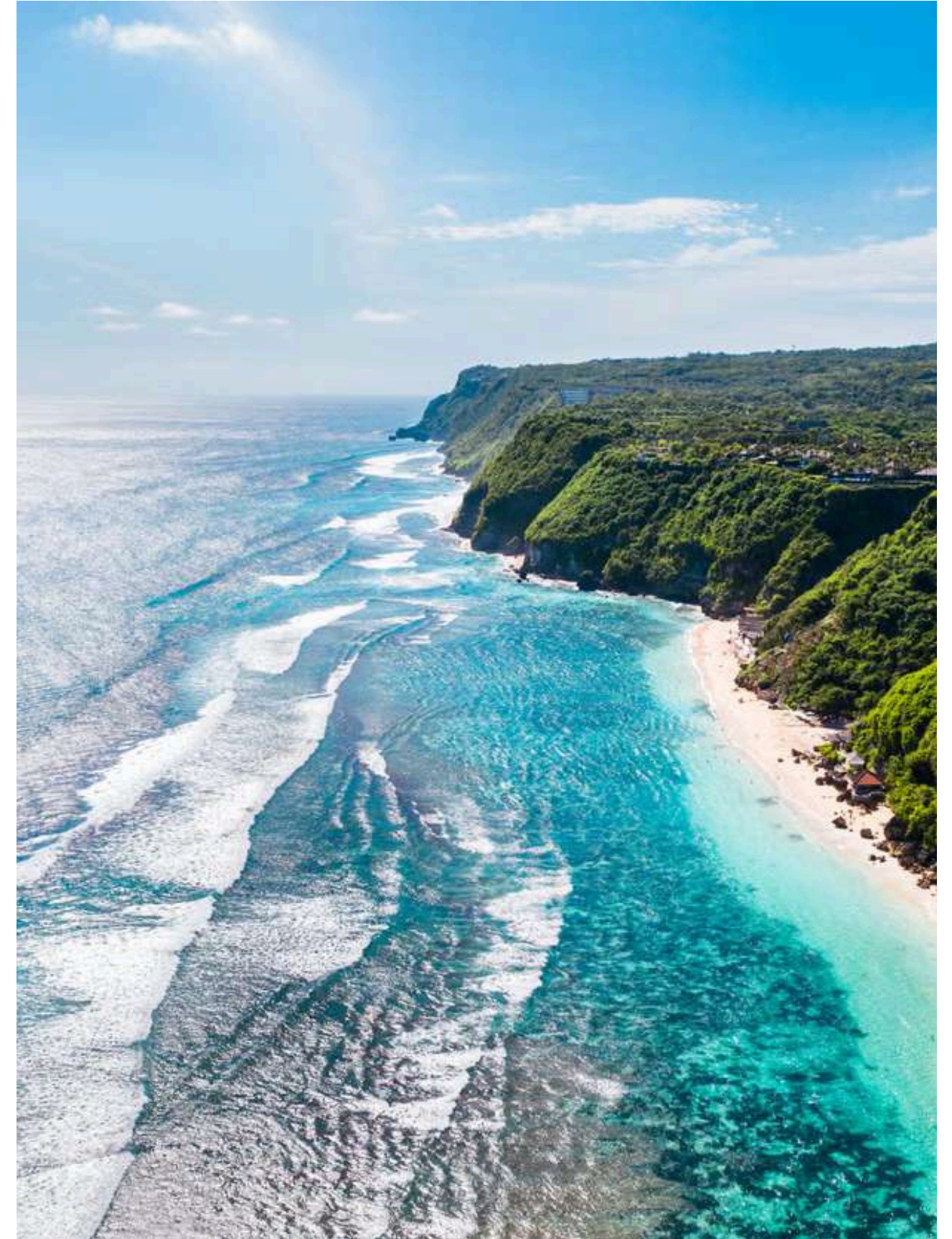
Each villa is architecturally designed to reflect the serene essence of its surroundings all while being functional and offering a contemporary living dream in prime location.



Bali, Indonesia

Bali is one of the prominent tourist destinations within the Indonesia archipelago and globally. Crowned one of the world's best destinations in 2017 and again in 2021 by TripAdvisor.

- 17,000 islands, known for their natural biodiversity
- Part of the Coral Triangle with world class diving sites
- World class surfing spots with year round consistency
- National parks, volcanoes, waterfalls, hindu temples and beautiful beaches
- Resorts, restaurants, yoga and wellness centres



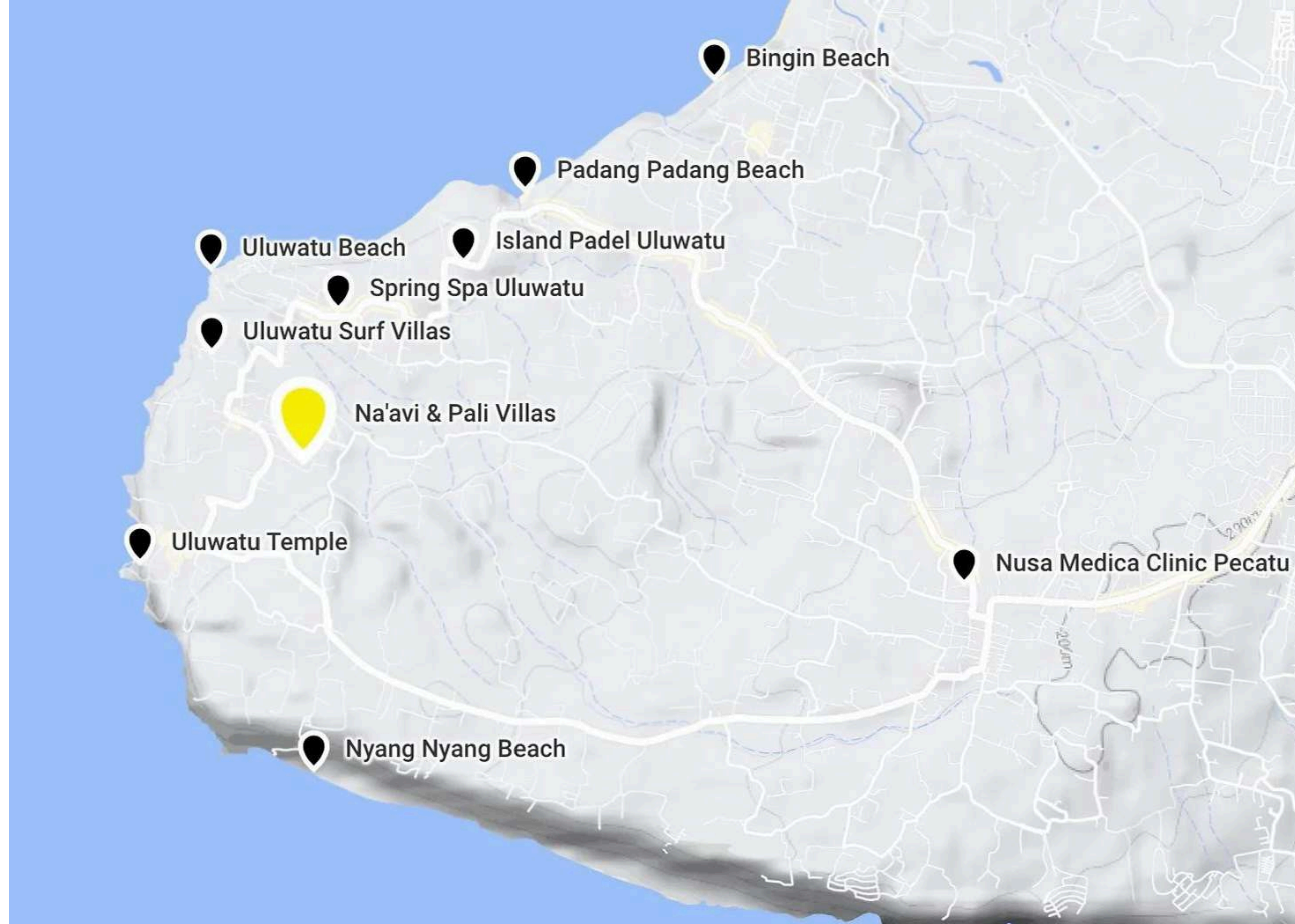
Uluwatu , Bali

The southern part of Bali, is now considered the most famous and newly developing area of Bali.

Uluwatu has something for everyone : great restaurants, co-Working spaces, yoga centres, endless waves, coffee shops, beach clubs, spas and much more.

Na'avi villas Location:

- 2 min to the Uluwatu beach
- 7 min to Bingin Beach
- Walking distance to cafes and restaurants
- 3 min to Island Padel Uluwatu
- 45 min from Bali International Airport



Villa Na’avi Specs

Starting at \$259,000 USD

Size	200 m² Land 120 m² Unit
# Bedroom	2 Bedrooms with Ensuite Bathrooms
Outdoor Area	15 m² Private Pool 25 m² Deck Outdoor Shower
Ownership Title	Leasehold 24 years + 25 Years Extension Guaranteed at Market Price
Key Handover	Q 3 2024
Furnishing	Fully Furnished Live In & Airbnb Ready
Parking	Private Car & Motorcycle



Interior Renders



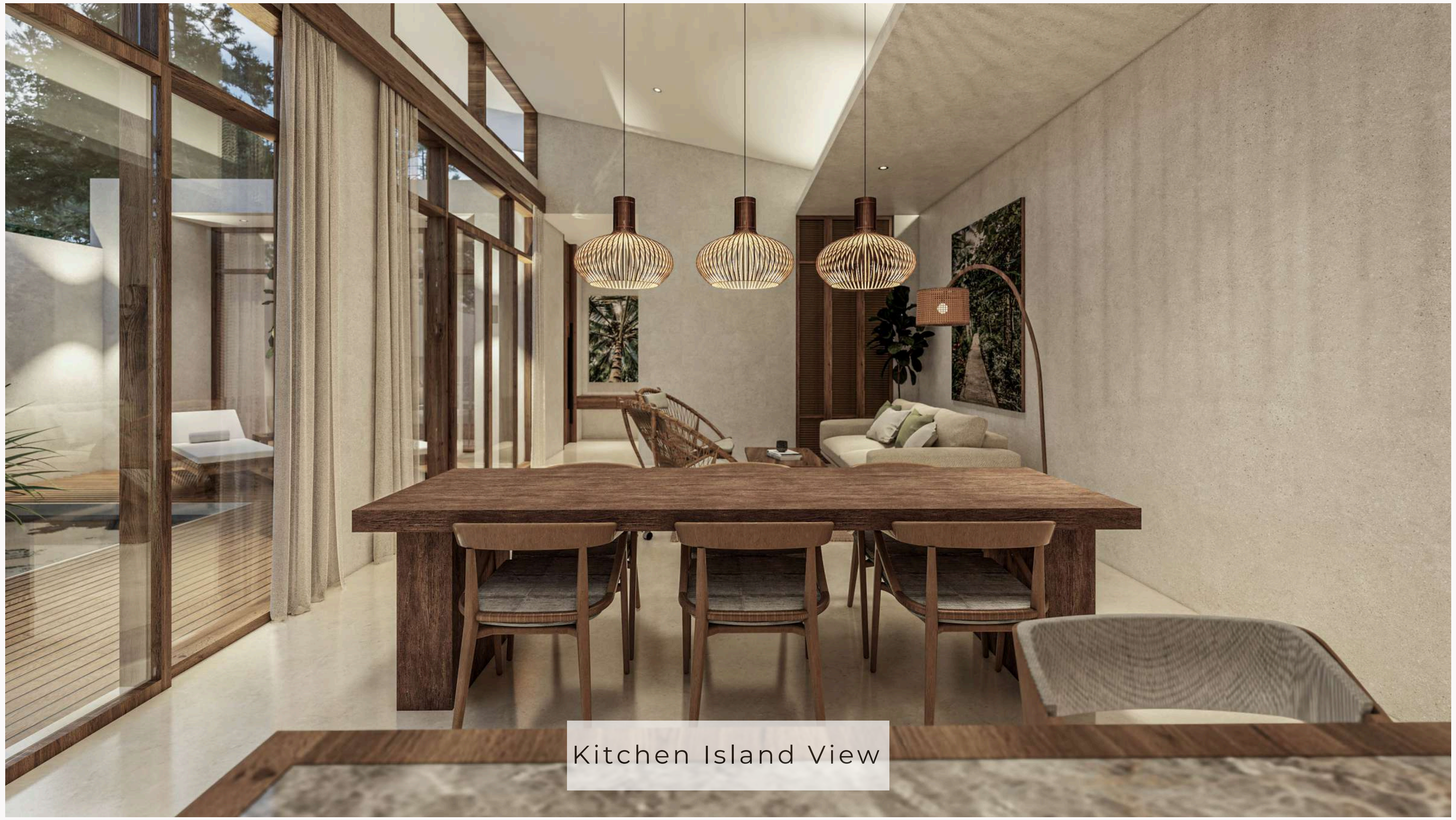
Living Room View 1



Living Room View 2



Dining Area View



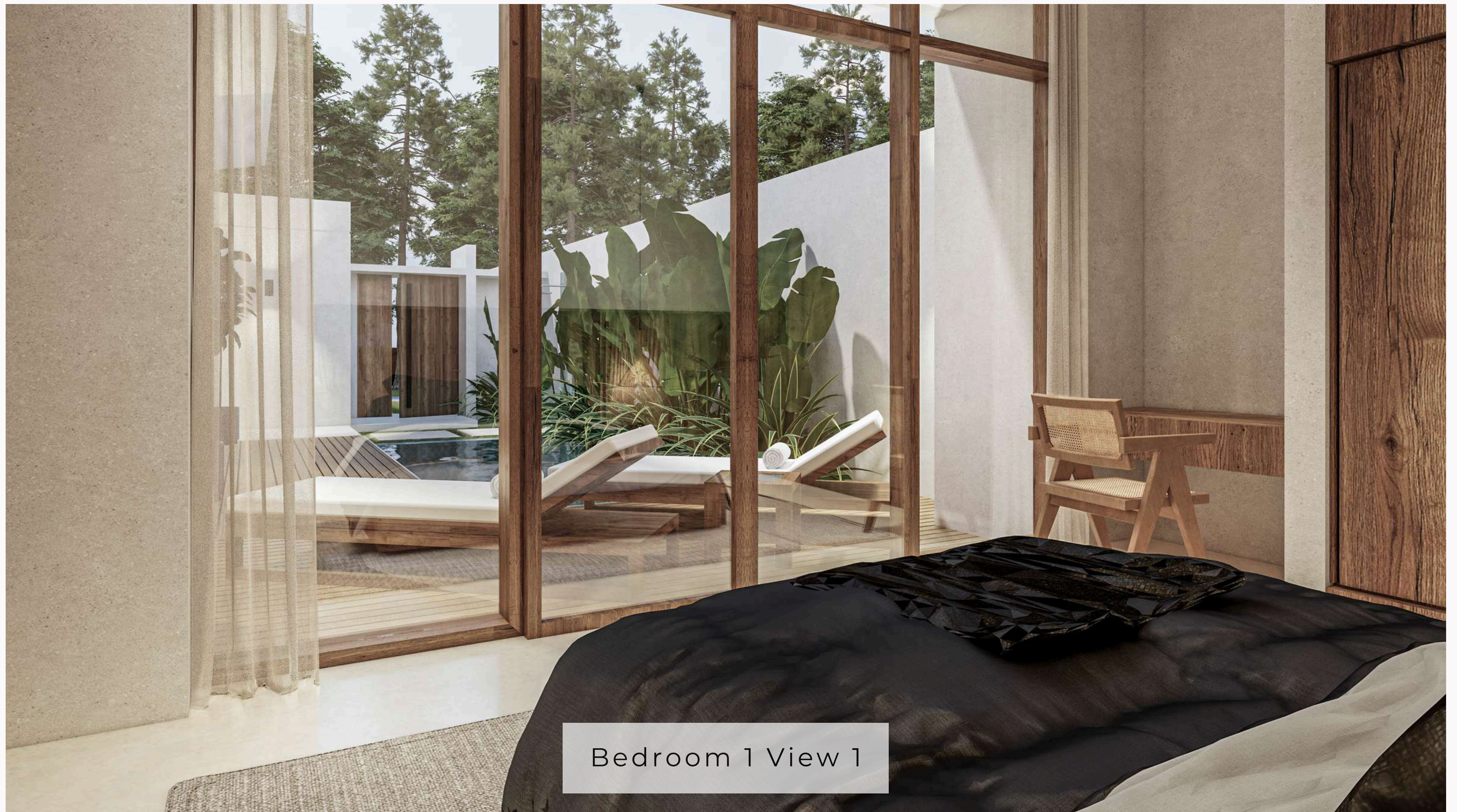
Kitchen Island View



Kitchen View



Entrance View



Bedroom 1 View 1



Bedroom 1 View 2



Bedroom 2 View 1



Bedroom 2 View 2



Bathroom 1 View 1



Bathroom 1 View 2

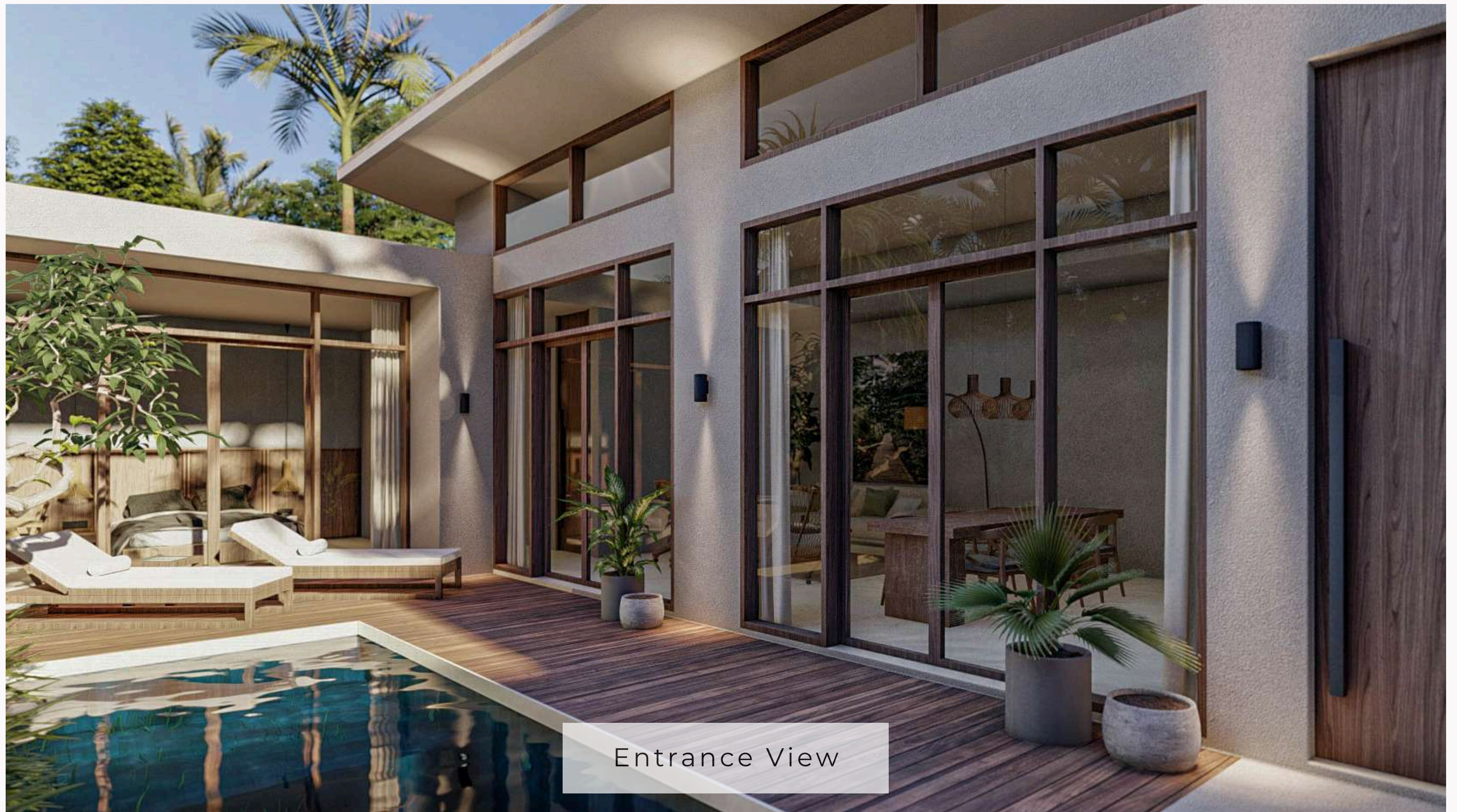


Bathroom 2 View 1

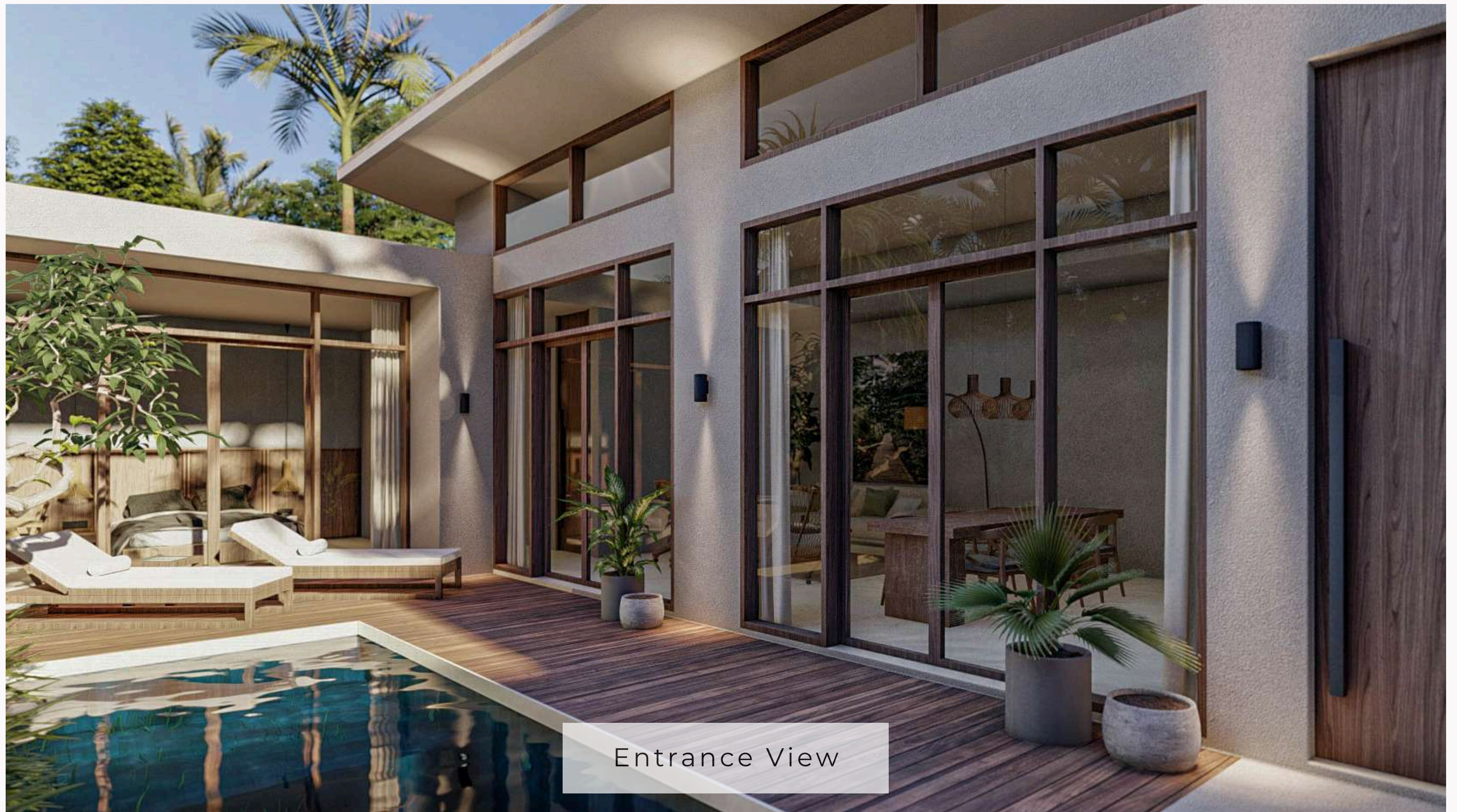


Bathroom 2 View 2

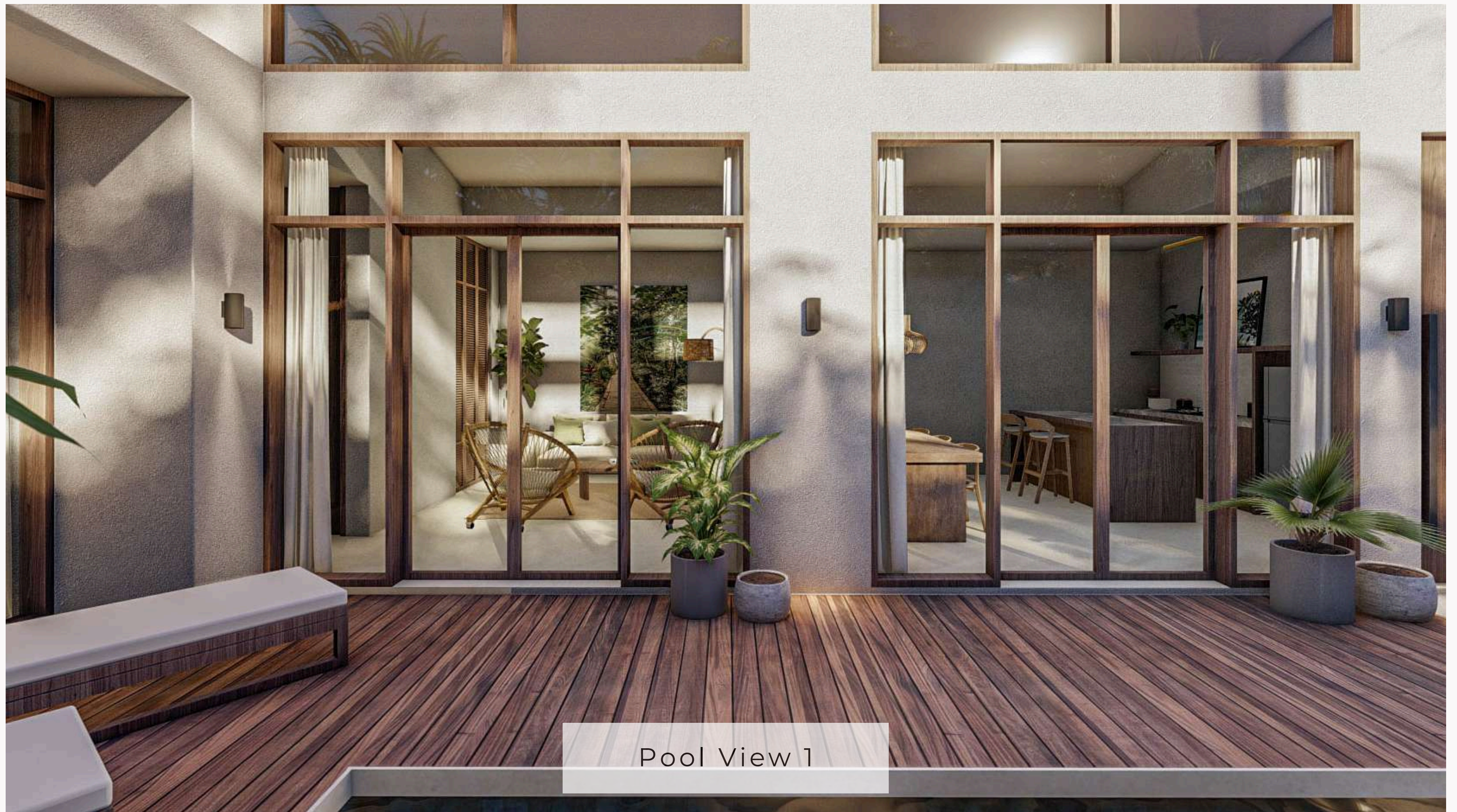
Exterior Renders



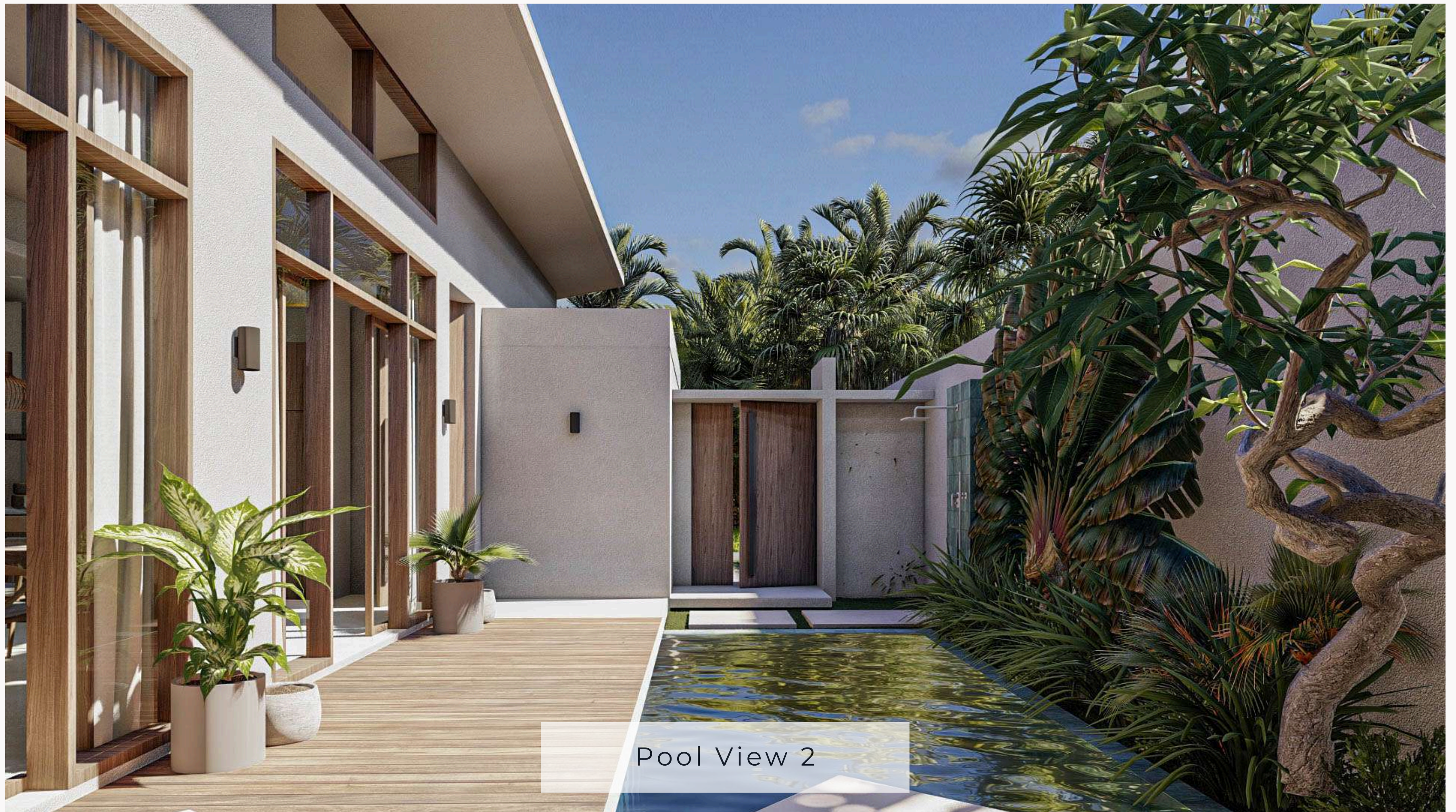
Entrance View



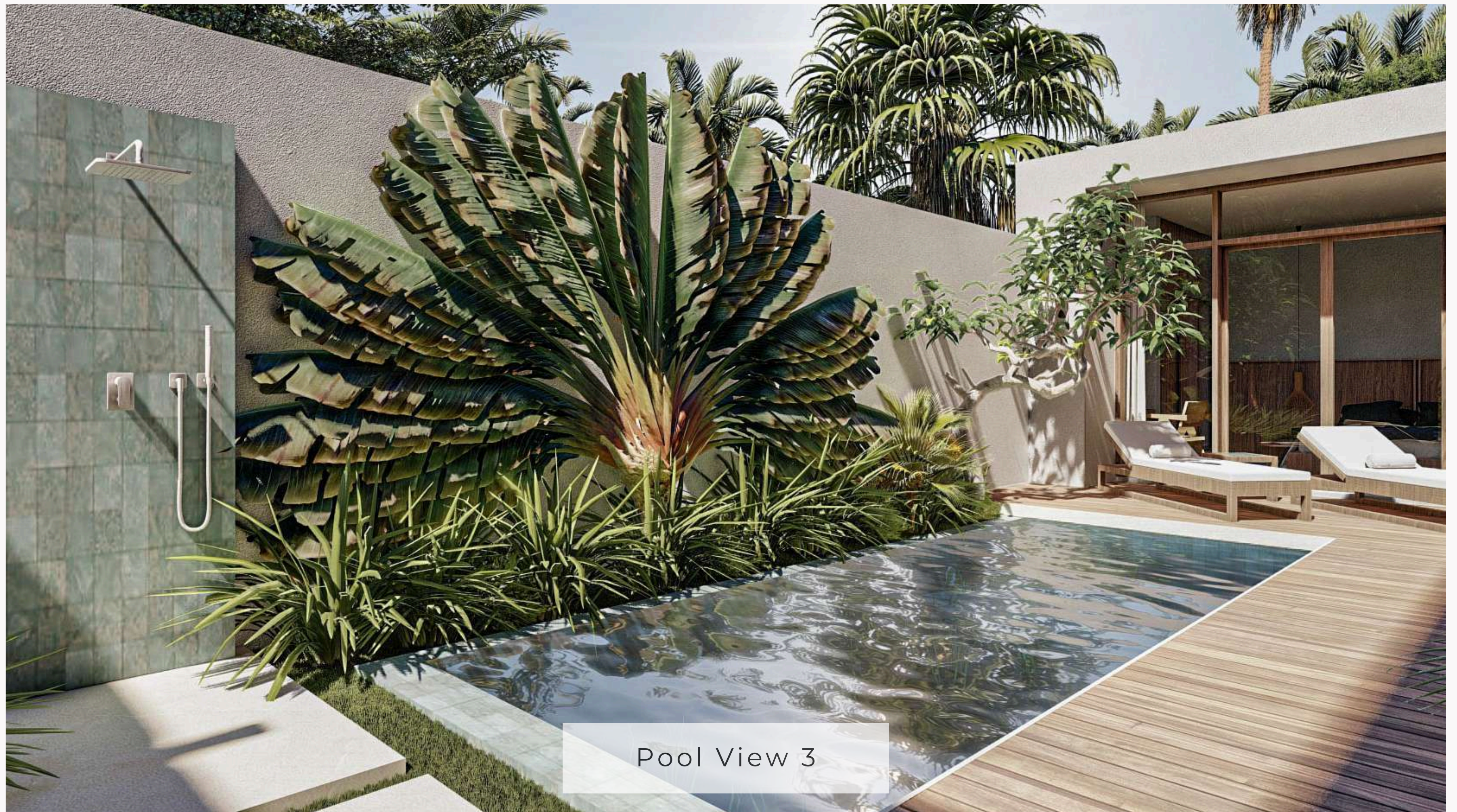
Entrance View



Pool View 1



Pool View 2



Pool View 3

A photograph of an outdoor shower area. The shower stall is set into a light-colored, textured wall and features a glass door with a silver showerhead and a vertical handle. To the right of the shower is a large, lush tropical plant with large, green, and yellow variegated leaves. To the left is a smaller, spiky green plant. The scene is brightly lit, with shadows cast on the wall. A semi-transparent white box with the text "Outdoor Shower View" is overlaid at the bottom center.

Outdoor Shower View



Street View



Premium Materials

Each villa presents a grand open-plan layout and floor to ceiling windows, formed with the highest quality materials.

Combining timeless design and a sustainable foundation, each home is built to endure the local climate and provide peace of mind for the owners.

Engineered to Last

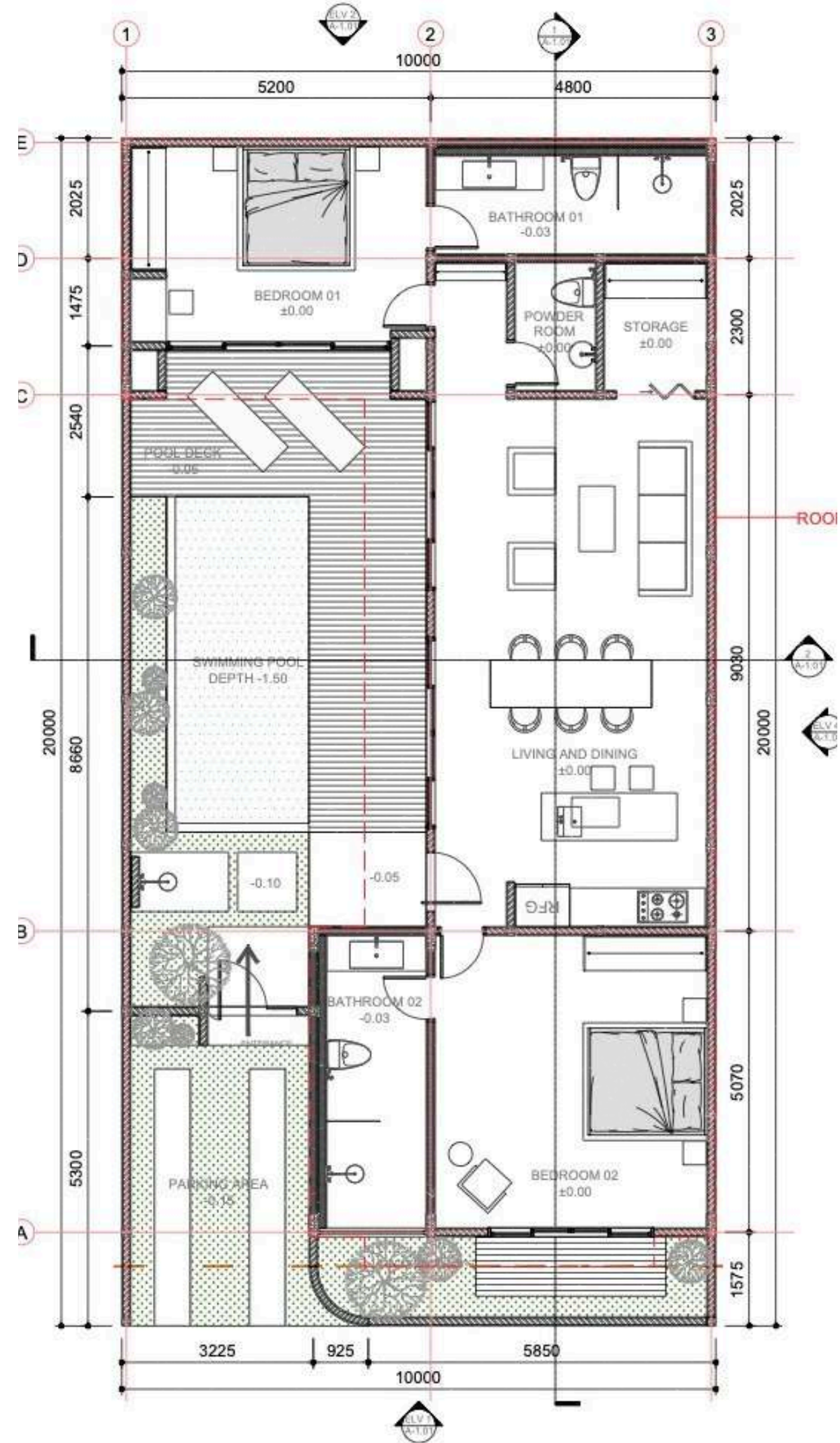
Niro Granite Tiles
Custom Reclaimed Teak Wood Furniture
Aluminium Frame Glass Doors
TOTO Sanitaries
Sukabumi Stone
QUADRA Kitchen Top



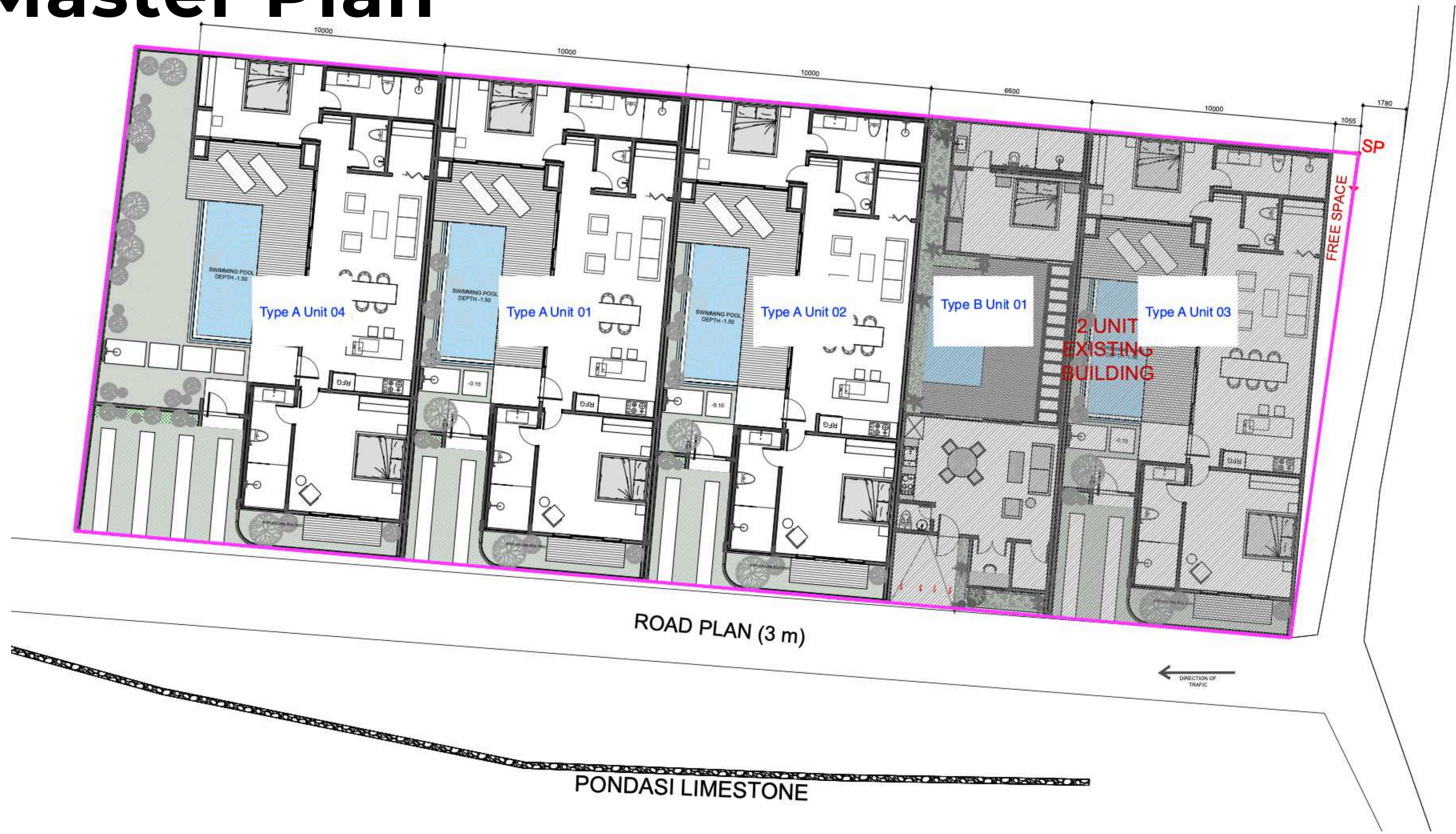
Villa Na'avi Floor Plan

Indoor : 117 m²

Outdoor : 83 m²



Master Plan

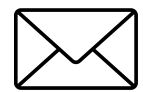


Get in Touch

contact us for more information



<https://www.bluekaiproperties.com/>



info@bluekaiproperties.com

Blue Kai Property Development

